



DOMANI

DOMANI RADIANCE is a patent-pending decorative translucent material that can be applied to most substrates for the hospitality and retail industries. Designed for interior or exterior applications for architectural partitions, doors, countertops (bar, vanity & furniture tops), point of purchase acrylic fabrication, visual merchandising and light diffusers. Over 600 graphic images and photographs or custom designs to meet your specific project needs.

Toll Free 877.786.8300 | 763.544.2441 | Fax 763.559.0260 | www.domaniusa.com
7135 Madison Avenue West, Minneapolis, MN 55427



PALM LEAVES



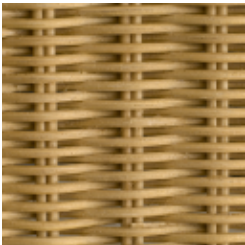
HOSTA



GRASS FIELD



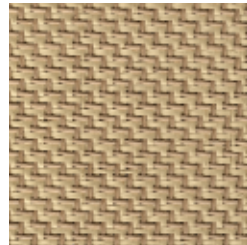
GRASS



WICKER



BAMBOO



WEAVE



RICE



FALL SUMAC



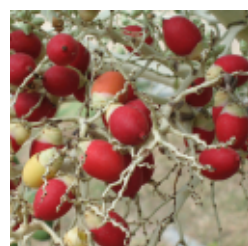
AIRBUS



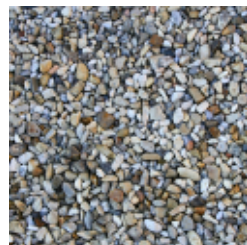
TIE DYE



AGAVE



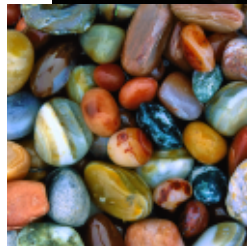
RED BERRIES



PEBBLES



AGATE WALL SCONCE



AGATE

ENVIRONMENTS